



TOYOTA
Believe

CAMRY





CAMRY GL IN SILVER PEARL



CAMRY ATARA IN OCEAN MIST

CAMRY

The 2016 Camry range now delivers a new dimension of innovation and style to the modern family car. Refined, desirable and packed full of the latest technology, Camry effortlessly combines enviable efficiency and advanced security with impressive performance.

Whether it's commuting to work, weekend sport or on a trip away, you'll drive with confidence knowing that you and the family will be happy, however long the journey. So settle in, make yourself at home and prepare to ride in style.



CAMRY ATARA SX IN WILDFIRE



CAMRY ATARA S IN GRAPHITE



CAMRY ATARA SX IN WILDFIRE

Pitch perfect for New Zealand roads

Underneath the bonnet sits a powerful 2.5-litre petrol engine, generating up to 135kW maximum power and 235Nm of torque (Atara, Atara S and Atara SX), whilst maintaining a cost-effective combined fuel economy of 7.8-litres/100km*.

The smooth six-speed automatic transmission with sequential shift gives you more freedom than ever, on the open road or around the city. Atara S and Atara SX allow you to exercise that freedom with steering wheel mounted paddle shifters.

The front and rear suspension systems of the Camry range have been fine-tuned for a smoother, suppler ride boasting better handling and cornering ability.



*Fuel consumption and CO₂ emissions will vary depending on driving conditions/style, vehicle condition and options/accessories fitted. Fuel consumption (combined ADR 81/02).

Features that make a difference

The open road or the corporate car park; the Camry looks and feels at home in either environment. With a refreshed exterior design and a fantastic level of high quality specification on-board, there is a Camry for every executive of life.



CAMRY ATARA IN OCEAN MIST

Exterior - a statement well made

The Camry range demands you take a second look, and a third. Not a single aspect has been left untouched by the design team. The refreshed Camry adds aggressive and sports styling to the quality and durability that have become synonymous with Camry.

The car is a study in aerodynamic efficiency, featuring bold, clean lines from grille to tail. This athletic body style combined with 16" alloy wheels make the Camry GL suit any situation. The Camry GL imparts an elegant stance, with a horizontal lower grille design that sets it apart from the sportier honeycomb patterned grille on the Camry Atara, Atara S and top grade Atara SX models.

The Atara S and SX take their implied sportiness to a natural conclusion with accented grilles and grade-specific 17" and 18" alloy wheels which perfectly complement the sports bumpers, rear lip spoiler (SX only) and twin exhaust.

All models boast standard LED Daytime Running Lights for improved visibility; an important new attribute for a model with a solid reputation for comfortable open road cruising.

Interior - new levels of comfort

With ergonomically crafted seat positions and angles, Camry boasts excellent leg room for rear passengers and superior comfort for any driver.

The intuitive instrument panel provides exceptional visibility and integrated audio units with Bluetooth hands-free phone capability, audio streaming, auxiliary and USB ports, plus a six-speaker set up offers exceptional sound quality.

The large touchscreen display with an integrated reversing camera screen for extra assurance, along with a grade-dependent mix of high quality fabric and leather seating ensure the contemporary styling is carried on throughout. A steering wheel featuring audio and Bluetooth hands-free phone controls and voice recognition are highlights on all Atara grades.

Toyota's designers know that long journeys are common for Camry owners and, as a result, have paid special attention on focusing on cabin quietness, with sound suppression technology greatly reducing engine noise for a smooth and peaceful driving experience.

The Camry is a car you'll enjoy spending time in.



A sports tourer that is fun to drive is one thing. A sports tourer that is fun to drive and features the added practicality of a large 515-litre boot for all manner of luggage is another.



With 133kW (GL) or 135kW (Atara, Atara S, Atara SX) of power on tap, along with improved on-road dynamics, the Camry really comes into its own on the open road. It's the perfect sedan for both the working week and the long weekend.



Every Camry features a 6.1" touchscreen display which allows access to all audio, phone and vehicle information. What's more this screen is also your window on the world behind, thanks to the integrated reversing camera with static guidelines.

GL

FRONT WHEEL DRIVE
2.5L PETROL
6-SPEED AUTOMATIC
TRANSMISSION
WITH SEQUENTIAL
MANUAL SHIFT

With its quieter than ever performance, enhanced safety and exterior design, along with a spacious interior, the Camry GL is your perfect companion for work and life.



Camry GL is finished in high quality fabric. The cabin offers a quiet, comfortable space for five adults.



All Camry models have a six-speed automatic transmission with sequential manual mode.



All Camry models feature integrated steering wheel mounted controls for audio, Bluetooth and the Multi-Information Display (MID) system, meaning that these convenience features are literally at the driver's finger tips.



The rear seats offer the added flexibility of 60:40 split folding, allowing better utilisation of boot space when carrying longer items.



CAMRY GL IN SILVER PEARL



Choose your grade, choose your grille. The Camry GL is distinct from its Atara siblings, with an elegant black horizontal design sitting below bright chrome. A stylish set of 16" alloy wheels are standard on the Camry GL, as is a temporary spare wheel.



ATARA & ATARA S

FRONT WHEEL DRIVE
2.5L PETROL
6-SPEED AUTOMATIC
TRANSMISSION
WITH SEQUENTIAL
MANUAL SHIFT

The Camry Atara and Atara S models bridge the style and performance gap between the GL and the sports themed Atara SX. The Atara builds on the GL with 17" alloy wheels, sports front grille and dual exhausts. Atara S features dual zone automatic air conditioning, high-grade seat fabric and paddle shifters for manual control of the 6-speed automatic transmission.



CAMRY ATARA S IN GRAPHITE



The Camry analogue dials have been designed to give the driver fantastic clarity at a glance.



If you prefer more action in your driving, changing gear in Atara S and SX models can be done using the paddle shifters.



The Atara S features a driver's seat with powered adjustment and lumbar support. Brushed metal door trim accents, stainless steel scuff plates featuring the Atara logo and synthetic leather arm rests are further premium accompaniments to a thoroughly modern interior.



With a maximum braked towing capacity of 1200kg, the Camry provides the driver with a practical tow vehicle for the garden trailer or jet ski at the weekends.



ATARA SX

FRONT WHEEL DRIVE
2.5L PETROL
6-SPEED AUTOMATIC
TRANSMISSION
WITH SEQUENTIAL
MANUAL SHIFT

Feel the luxury of the sleek leather interior, or feel at one with the road with exclusive sports suspension and sports tuned power steering. With unrivalled sports styling the Camry Atara SX gives the driver who wants it all, everything.

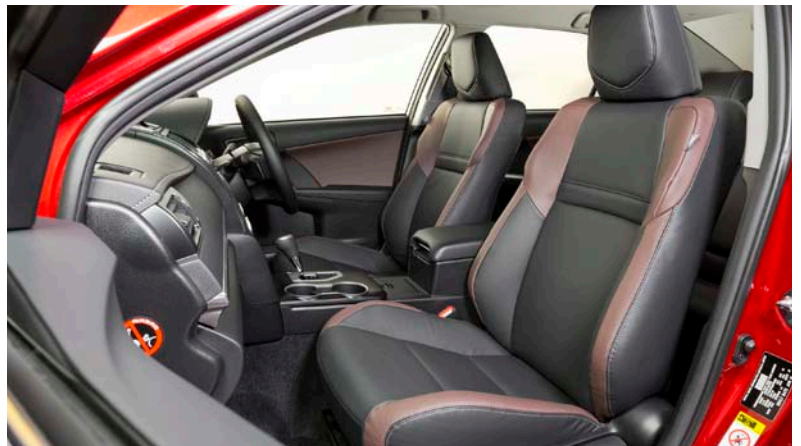


Both Atara S and SX models feature smart key wireless entry; handy when you have your hands full.

CAMRY ATARA SX IN WILDFIRE



The well-appointed dashboard is accentuated with a line of contrasting stitching, adding to the elegant interior styling of the Camry Atara SX.



The Atara SX is a sports tourer with emphasis on the word 'athletic'. Numerous individual exterior and interior design elements hint an athletic character, including the perforated metal sports pedals. Leather sports seats with firm side bolster support and driver's eight-way power adjustment are standard in the Camry Atara SX.



Rear seat passengers in the Atara SX will enjoy the excellent leg and head-room this spacious sedan offers. Rear seats split 60/40 for increased luggage space.



Sequential manual shift and paddle shifters will add excitement to open road driving.



The Camry Atara SX looks the part with exclusive boot lip spoiler, dark chrome rear trim and gloss black 18" alloy wheels.



CAMRY ATARA S IN OCEAN MIST

Safe for the long haul

We've long recognised the fact that Camry drivers cover large distances and often spend a lot of time behind the wheel. Assured safety is paramount and Toyota's design team easily met the standard requirements for achieving a 5-star ANCAP safety rating.

Every Camry features a suite of safety technology designed to look after driver and passengers alike. Vehicle Stability Control (VSC) features in all models, along with a reversing camera integrated into the 6.1" touchscreen display.

Collision safety technology has been incorporated throughout, from the body panels and construction, through to the seat design that not only increases comfort, but actively absorbs collision energy.

Additionally every Camry features a suite of safety technologies, including Traction Control (TRC), Anti-lock Brakes (ABS), Brake Assist (BA) and Electronic Brake-force Distribution (EBD).



Electric Power Steering (EPS) is vehicle speed sensitive so low speed manoeuvres require minimal effort while at highway speeds less assistance is provided. The turning circle is a city friendly 11.4m.



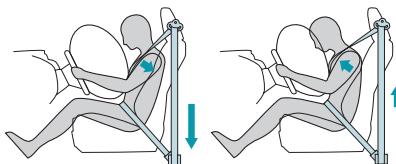
Three rear seat tether anchors enable child seating to be securely attached.



Vehicle Stability Control (VSC) and Traction Control (TRC) work in the background to add an extra margin of safety.



Safety isn't just a priority for the Camry. The 5-Star ANCAP safety rating is testament to its renowned Toyota build quality.



Front seat pretensioners instantly tighten the seat belts at the time of a collision to help enhance occupant restraint performance. The force limiter function loosens the seat belts while maintaining the load to help mitigate the impact to the chest regions of the front seat occupants.



Standard across all models, a reversing camera with guidelines greatly enhances your safety by helping you avoid pedestrians and obstacles when backing out of a tight spot. It's also great to feel that extra confidence if you ever get nervous in car parks.



Every Camry has you covered with an impressive array of safety features, including a full set of seven-airbags (Driver, Front Passenger, Front Side, Front & Rear Curtain and Driver's Knee).



Camry Atara in Silver Pearl shown fitted with: towbar and wiring harness; 18" TRD alloy wheels.

Make Camry your own

Only Toyota Genuine Accessories are designed and manufactured to the same high standard as original parts. They are engineered using manufacturer data to ensure that vehicle integrity is not compromised. This means the functionality of important precision systems such as airbags will not be impaired by their installation.



Alloy wheels. Add a sporty flavour to your Camry with European designed 18" TRD alloy wheels in dark metallic anthracite finish.



Mudguards. Keep mud and dirt on the road where it belongs. Only available on selected models.



Bonnet protector - vinyl. This discrete anti-chip clear film is custom shaped to protect the bonnet from stone chips, insects and paint damage. Resistant to UV discolouration.



Towbar. The fixed tongue towbar and accessories allow you to tow a maximum braked load of 1200kg and unbraked load of 500kg with your Camry.



Cargo liner - rubber. Protect the luggage area with this all-weather cargo liner. Custom moulded to ensure a secure fit and made from a highly durable and flexible material. Remove and hose off for easy cleaning.



Carpet floor mats. Protect the floor area of your Camry from daily wear and tear with tailored carpet floor mats, woven from premium quality materials. Featuring distinctive Camry branding, the driver's side floor mat features two retaining clips to ensure it stays securely in place.

Camry exterior colours

Diamond White
061



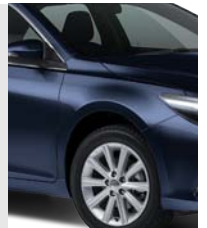
Graphite METALLIC
1G3



Magnetic Bronze MICA METALLIC
4S2
N/A ATARA/
ATARA SX



Indigo MICA METALLIC
8W6
N/A GL



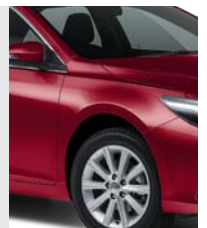
Silver Pearl METALLIC
1F7



Eclipse MICA
218
N/A GL



Wildfire MICA METALLIC
3R3



Ocean Mist MICA METALLIC
8S0



Camry interior trim

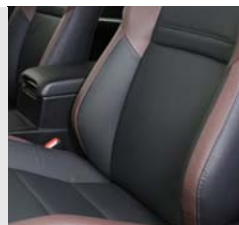
GL/ATARA
BLACK FABRIC



ATARA S
BLACK FABRIC



ATARA SX
BLACK &
BURGUNDY
GENUINE
LEATHER
SEAT FACINGS



Ocean Mist
MICA METALLIC
8S0



CAMRY SPECIFICATIONS

	GL	ATARA	ATARA S	ATARA SX	
MECHANICAL SPECS	Engine description	2.5 Litre, 4 cylinder petrol engine, In-line type. Front wheel drive (2WD)			
	Valve mechanism	16-Valve Double Overhead Camshaft (DOHC), with Dual Variable Valve Timing with intelligence (VVT-i)			
	Maximum power	133kW @ 6000rpm	135kW @ 6000rpm	135kW @ 6000rpm	135kW @ 6000rpm
	Maximum torque	231Nm @ 4100rpm	235Nm @ 4100rpm	235Nm @ 4100rpm	235Nm @ 4100rpm
	Fuel type, tank capacity 70 litres	91 unleaded petrol or higher			
	Fuel economy - ADR 81/02 combined cycle*; CO ₂ emissions - ADR 81/02 combined cycle*. Euro 4	7.8L/100km / 183 g/km	7.8L/100km / 183 g/km	7.8L/100km / 183 g/km	7.8L/100km / 183 g/km
	Transmission - Six speed automatic with sequential shift	•	•	Paddle shifters	Paddle shifters
STEERING, BRAKES & SUSPENSION	Electric Power Steering (EPS), manual tilt and telescopic (minimum turning circle 11.4m)	3.12 turns lock to lock	3.12 turns lock to lock	3.12 turns lock to lock	2.85 turns lock to lock
	Brakes - Ventilated front disc; solid rear disc; pedal type park brake	•	•	•	•
	Anti-Lock Braking System (ABS) with Electronic Brake-force Distribution (EBD) and Brake Assist (BA)	•	•	•	•
	Suspension - front: MacPherson strut type with stabiliser bar; rear - dual link type with stabiliser bar	•	•	•	Sports type
EXTERIOR FEATURES	Wheels - Design and size	10-spoke 16" silver alloy	10-spoke 17" silver alloy	10-spoke 17" silver alloy	5-spoke gloss black 18" Alloy
	Tyre size; full size spare wheel in Atara and Atara S, temporary in GL and Atara SX	215/60 R16	215/55 R17	215/55 R17	225/45 R18
	Spare wheel	16" steel black	17" silver alloy	17" silver alloy	16" steel black
	Front design: Black front grille, chrome centre grille (dark chrome Atara SX). Lower front grille:	Horizontal fins	Honey comb sports style	Honey comb sports style	Honey comb sports style
	Front design: Halogen headlights with light control system (auto on/off); separate high/low beam with piano black accent Atara S and Atara SX; LED Daytime Running Lights; body coloured front bumper	•	•	•	•
	Side design: Body coloured exterior door handles with front door smart key sensors (Atara S and SX only) Electric adjustable exterior mirrors with LED side indicators	•	•	•	•
	Rear design: Chrome rear boot garnish (dark chrome on Atara SX), Body coloured rear bumper with black diffuser (sport diffuser on Atara models)	Single exhaust	Dual exhausts	Dual exhausts	Dual exhausts
INTERIOR FEATURES & CONVENIENCE	Smart entry and start system			•	•
	Air conditioning - Clean air filter; with rear seat air conditioning outlets	Manual	Manual	Dual zone automatic climate control	
	Seat material	Fabric	Fabric	Fabric	Leather
	Front seats - Manual slide and recline function, driver vertical adjustment	•	•		
	Front seats - Driver power slide/recline function, cushion angle, lumbar and vertical adjustment; passenger manual slide/recline			•	Sport style seat
	60:40 split-fold rear seat backs	•	•	•	•
	Instrument panel finish	Painted silver	Painted Silver	Brushed metal	Sports mesh
	Power windows front and rear, driver's side auto	•	•	•	•
	Cruise control	•	•	•	•
	3-spoke urethane tilt and telescopic steering wheel with Audio and Bluetooth controls; urethane gear lever	•			
	3-spoke leather tilt and telescopic steering wheel with gear shift paddles (Atara S/Atara SX) and audio and Bluetooth controls; voice recognition; leather gear lever		•	•	•
	Door scuff plates - Front black resin with stainless steel Atara logo (n/a GL); Rear black resin	•	•	•	•
	Sports pedals - Aluminium with black rubber dots				•
Centre console storage boxes, lockable glove box (with light Atara S, Atara SX); sunglasses holder - front overhead	•	•	•	•	
Door pockets - Driver and front passenger; rear seat storage pocket - behind front passenger seat	•	•	•	•	
4 cup holders (front console and rear centre armrest); bottle holders in each door	•	•	•	•	
AUDIO & CONTROLS	6.1" colour touchscreen display, radio, single disc MP3/WMA CD player, auxiliary input jack and USB connection, Bluetooth handsfree phone capability and audio streaming, album jacket display; fuel consumption, vehicle setting displays and 6 speakers; voice recognition (n/a GL). Antenna in rear glass	•	•	•	•
	Analogue speedometer	•	Sports	Sports	Sports
	Economy meter with Eco indicator	•	•	•	•
SAFETY AND SECURITY	5-Star ANCAP safety rating	•	•	•	•
	SRS airbags x 7 - Driver and passenger front, front side, front/rear curtain shield and driver's knee	•	•	•	•
	2x3-point ELR front seat belts with pre-tensioners and force limiters; 3x3-point ELR rear seat belts; child restraint system with 3 tether points, adjustable front seat belt anchors. Front and rear seat belt warning buzzer and lights	•	•	•	•
	Vehicle Stability Control (VSC) with on/off switch and Traction Control (TRC)	•	•	•	•
	Reversing camera with static guidance lines	•	•	•	•
Engine immobiliser and horn alarm	•	•	•	•	
DIMENSIONS	Overall length / width / height:		4850mm / 1825mm / 1470mm		
	Wheelbase:		2775mm		
	Seating capacity / Luggage capacity:		5 / 515L		
	Kerb weight - Minimum/maximum / Gross vehicle weight:	1460-1465kg / 2100kg	1470-1505kg / 2100kg	1470-1505kg / 2100kg	1485-1495kg / 2100kg
	Maximum towing capacity - braked / unbraked:		1200kg / 500kg		

Because Toyota believes in going the extra mile we offer comprehensive support and a great range of products and services for our valued customers.

For more detail please visit: toyota.co.nz



*Fuel consumption and CO₂ emissions will vary depending on driving conditions/style, vehicle condition and options/accessories fitted. Fuel consumption (combined ADR 81/02). For more information on fuel consumption ratings and factors that affect fuel economy, please visit: toyota.co.nz/fuel-economy

Every endeavour has been made to ensure text details and specifications contained in this publication were accurate as at 8 September 2015. Toyota New Zealand Limited reserves the right at any time to introduce any changes deemed necessary to improve the models shown or for any other reason. Paint and upholstery colours shown in this brochure may differ from actual colours due to variations in printing processes. Some models shown in this brochure may have optional accessories fitted. For further information contact your nearest Authorised Toyota Dealer. They will be glad to assist. [Production effective March 2015]

1,500
September 2015
SB350

